

MENS

Mens Shirts (Half Chest)

Label	S	M	L	XL	2XL	3XL	5XL
Fits Chest (CM)	52	55	58	61	64	67	73

Kids Shirts (Half Chest)

Label	4	6	8	10	12	14
Fits Chest (CM)	37.5	40	42.5	45	47.5	50

Mens Jackets (Full Chest)

Label	S	M	L	XL	2XL	3XL
Fits Chest (CM)	119	124	129	134	139	144

Kids Jackets (Full Chest)

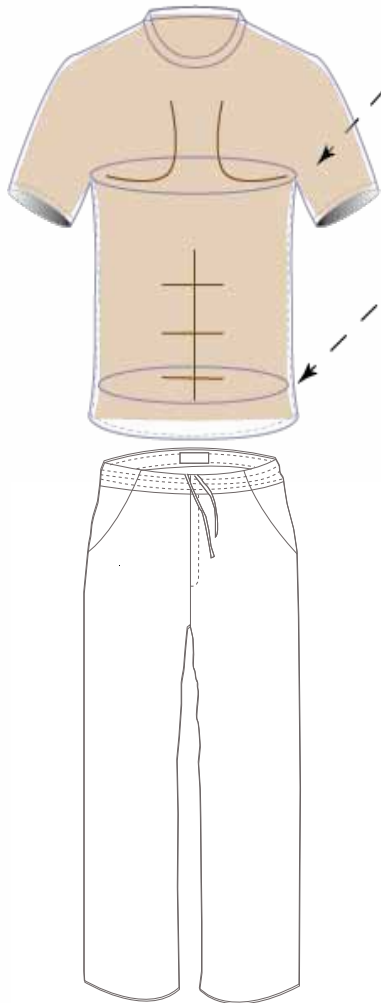
Label	4	6	8	10	12	14
Fits Chest (CM)	84	90	96	102	108	114

Mens Pants (Full Waist)

Label	S	M	L	XL	2XL	3XL
Fits Chest (CM)	69	72	75	78	81	84

Kids Pants (Full Waist)

Label	4	6	8	10	12	14
Fits Chest (CM)	47	50.4	54	57.4	61	64.4



Chests:

Measure under arms around the fullest part of the chest.

Be sure to keep tape level across back and comfortably loose.

Waist:

Measure around natural waist of where you want the waistband to sit with a measuring tape.

Be sure to keep tape comfortably loose.